



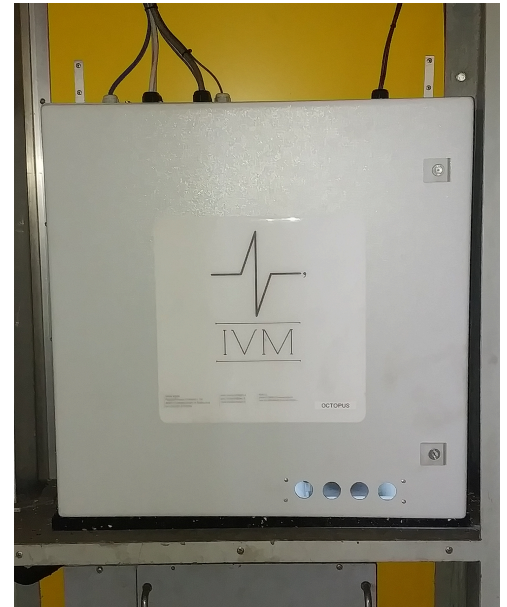
Innovative Vibration Monitoring

OCTOPUS

Wheel/Rail Interaction Diagnostic System

OCTOPUS

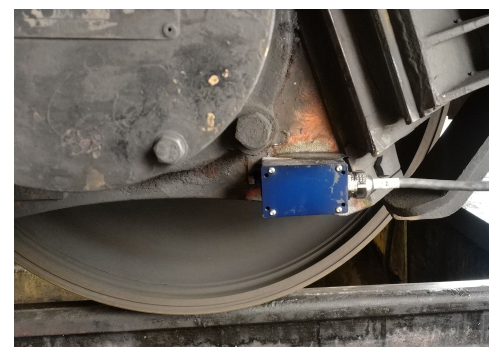
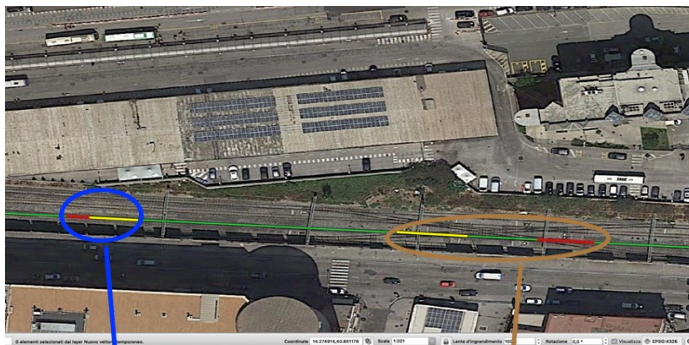
Wheel/Rail Interaction Diagnostic System



OCTOPUS is a system designed to monitor the wheel/rail interaction, by measuring the axle box accelerations during rolling stock running. It consists of several accelerometers, installed in different points, whose accelerations are acquired with absolute synchrony and georeferenced by a GNSS.

The sophisticated data processing allows to acquire information on the wheel/rail, bogie/track and wagon/track interaction, in order to get diagnostic elements of the track.

OCTOPUS, which requires practically no maintenance, can be installed on trains in standard operation, that, by running frequently on the same routes, enable us to follow the evolution of the wear status of the railway line.



Via Benedetto Brin, 59 - int. C18
80142 - Napoli (NA)

P. Iva 07729091210

www.ivmtech.it - info@ivmtech.it



Management
System
ISO 9001:2008

www.tuv.com
ID 9105085271

