



Innovative Vibration Monitoring

IQM-WTI

INNOVATIVE QUALITY MONITOR OF WHEELSETS/TRACK INTERACTION

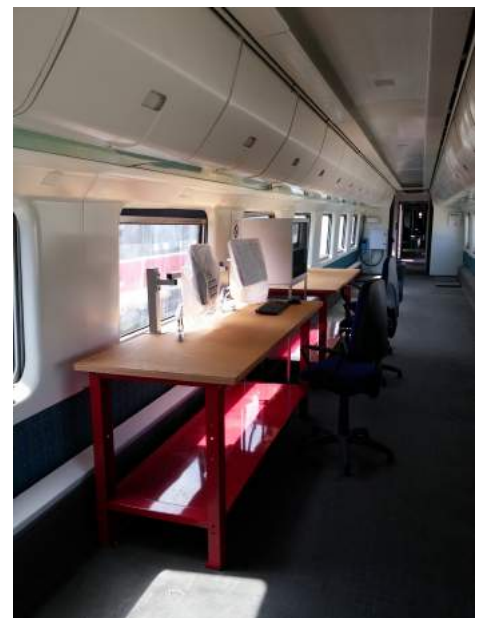
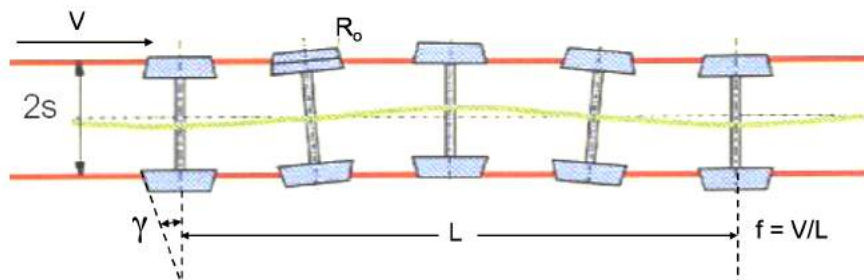
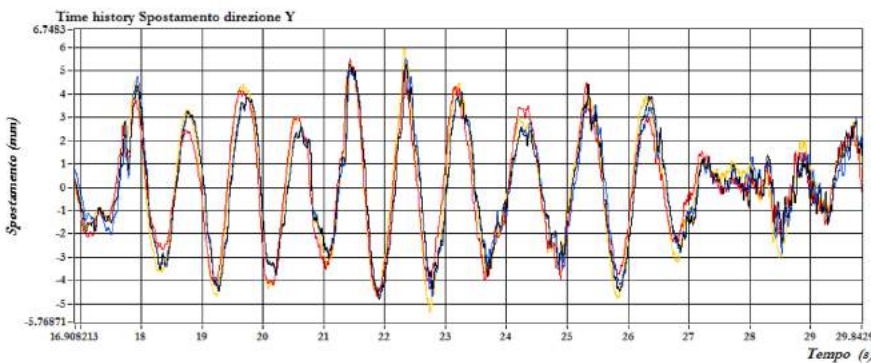
IQM-WTI

Innovative Quality Monitor of Wheelsets/Track Interaction



IQM-W/TI is a system designed to monitor the wheel/rail interaction, by measuring the axle box accelerations during rolling stock running. It consists of several sensors, installed in different points, acquired with absolute synchrony and georeferenced by a GPS. The absolute synchronicity of the acquired accelerometric data and the sophisticated data processing, allows to obtain diagnostic informations of the wheelset/track interaction, of the bogie/rail interaction and of the wagon/rail interaction.

IQM-W/TI, when installed on board of trains that runs frequently on the same routes, connects diagnostic elements to the railroad, in order to obtain informations on possible degradation of the railway line.



Via Benedetto Brin, 59 - int. C18
80142 - Napoli (NA)

P. Iva 07729091210

www.ivmtech.it - info@ivmtech.it

